

' by{1b Z @/annjy tMi b ` @Zxfb/Zy
YÜÝP?' < ' *3° 1 >B" @A*53@l ° 3@H "?@
<ny{ZX ° | ` | y{ ÜáŞYÜÝP

>Ü©?ZfZ, b ` {aZ 1Mj` bjMbZ M Xb nxy yqZSb yZzk y {aZ M Xb y MZ Vnk ujZ{ZX My b_tn| MZ M{b ` My
M nfZx k Zl { MZl Vt X| Z {n xZVZb` u| Ujb_ | XySU| { tMj MZ xZun{ZX My MaÜÜPª *y {aby VhxxZV{¥
A: Yes

>Ý© xZ {aZ XZuny y tn| aMfZ V| xxZl {jt VhjjMZxVbZX My uZx 1n| bM M u| Ujb_ | Xy x| jZy¥
A: Public funds are. Some private funds are as well, but not all.

>P©<jZMjZ Vnl _bk ' by{1b Z @/annjy by nuZxMb ` _bZ yWannjy M {aby {b Zª 5xXnZy' by{1b Z V| xxZl {jt
nuZxMZ_n| xyWannjy M X by y{Mb ` _bZ yWannjy b {aZ ?' < My b Z. uZV{y {n nuZl M Z, yWannj X| xb ` {aZ
{Zxk n_{aZ Vnl {xW{¥
A: That was an error, FirstLine currently operates four public, open-admission charter schools: Arthur
Ashe Charter School, Samuel ^bŁŁ

> ä© MI ' by{1b Z ujZMjZ uxnfbXZ MXXb{nl NjVhl {Z..{ Mn|l X , aM , n|jX {xb` Zx{aZ
l ZZX_nxMuZx_nxk MIVZ Unl X^a

A: This was an error that it was noted in the RFP - we do not see that as applicable to this RFP.

> ä©H aM by {aZ jZl ` {a n_{aZ Vhl {xW{ {Zxk ¥

A: We intend to create a long term banking relationship through this RFP process.

> ÜÜ©yM, x{Zl Vhl {xW{ MZw{ bZk Zl { n_{aby ununymj¥

A: no

> ÜÜ©AaZ?' < xZw{ Zy{y -° l l | NjZx@uxb` SU| { {aZ fnj| k Zy b Vj| XZ xMl` Zy^{aaa}yan|jX , Z |yZ Ml
-° fZxMZ@n_{aZ xMl` Z uxnfbXZ {n Ml | NjZx@{aZ_ZZy^a*_l n{Syant|jX , Z h y{ uxnfbXZ ' by{1b Z , k{a {aZ
-k nl {ajt nxuZxkZk_ZZ@Mxl n{ Ml -Ml | NjZx@_ZZ¥' nxZ.Mk ujZ©H bZ <Mk Zl {yMZ Ü'a uZx
tZM^{aaa}yan|jX , Z h y{ uxnfbXZ {aZ_ZZyxZjMZX {n Ml 5| {` nb` H bZ nxXn , Z {MlV

>Üa©<jZMyZ vJMb† b_{

> Yp© .uZI yZ k MIMZk ZI { ' 5uZxMl b ` Z.uZI yZy b WZMYZX Ut YÜö _xnk ' JYÜ {n ' JYÝª

A: There were many factors affecting the increase in expenses. Included in this was the increased federal funding that allowed for additional staffing and other expenditures, a return to fully in person learning and inflationary increases along with many other factors.

> YB© bZl {n {MIZl xnjkk ZI { XZVj b ZX _xnk pSáá {n pSÜBáS, My {aby Mj ' b _jMlml Mx b WZMYZYª

A: See Q23 above.

> Yá© n, aMfZ Ml t y(M_l b ` µ { | x nfZxby | Zy, b a {ZMaZxy tk uWfZX {aZ nx' Ml bMl y b VZ {aM aMy UZZl aM uZI b ` k nxZ Vnk k nl jt l n, NKM yª

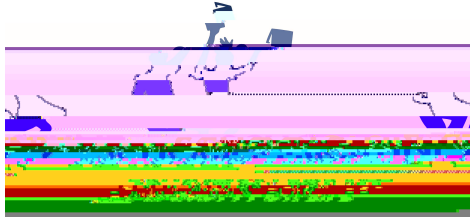
A: As with schools across the nation, we are working hard on teacher retention to ensure the best possible education for our students.

> Yá© n, , My ' JYp nuZxMl b ` uZx_nxk Ml VZ Ml X Wya uny (l ml ¥ ž n tn | aMfZ l nl ' Ml X b ZX XxMl ' JYp y (Mzk ZI {y MfMjZ tZ {¥ * _l n {SMM {aZ k ny { xZVZl {jt MfMjZ b {Zxk UZ ux n fZXZ b Vj | Xb ` Vnk uMfZ b {Zxk _nx ux n x tZMª

A: These are not yet available.

> Yá© H aMl VM yZX {aZ Vjny b ` n _1bZ 5Ml Ml X , aMl , bj {aZ tk uWf UZ ¥ ž bX {anyZ y (| XZl {y ` n {n {aZ n {aZxy Vannjy b {aZ yty {Zk ¥

A: Live Oak closed due to citywide enrollment trends. There are too many seats in New Orleans for the number of students in our city. We made the decision to close the school to ensure a high quality education for all students we serve. Appror 2e umg beq.



> PÜ© xZ uZx_nxk MIVZ k Z{xyxZw| bZXSMIX an, byVnk ujbmIVZ, b{a {aZyZ uxhfZVZX {n UZ¥
A: Yes, we do have performance metrics and we believe we will meet and/or exceed the bar.

> PÝ©H hjj ' by{1b Z MWZu{ Mjb i {n n| x_b MIVb|b _nxk M|b| ¥
A: yes